

# Data7 Consultancy

www.data7consultancy.com

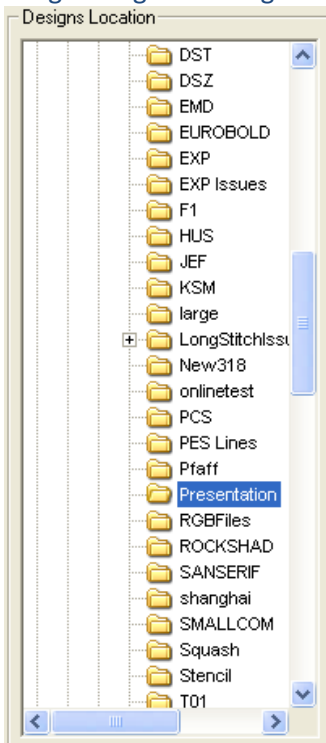
How to convert a whole folder of designs using the Data 7 Conversion tool

## Step 1:

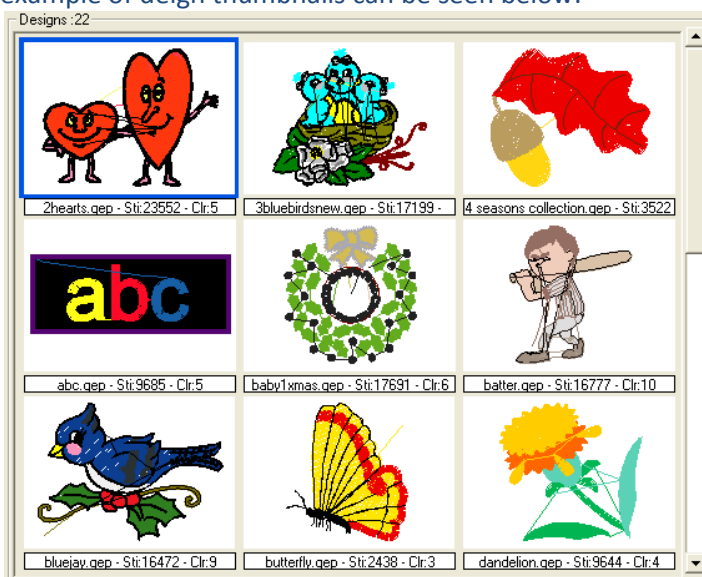
Start the Data 7 Conversion Tool – Remember to check for updates on our website for the latest version.  
[www.data7consultancy.com](http://www.data7consultancy.com)

## Step 2:

Browse to the folder where the embroidery designs are that you want to convert to another format of design using the “designs location” browser shown below.



Clicking on the desired folder will display the design thumbnails for all and only the support file formats. An example of design thumbnails can be seen below:-

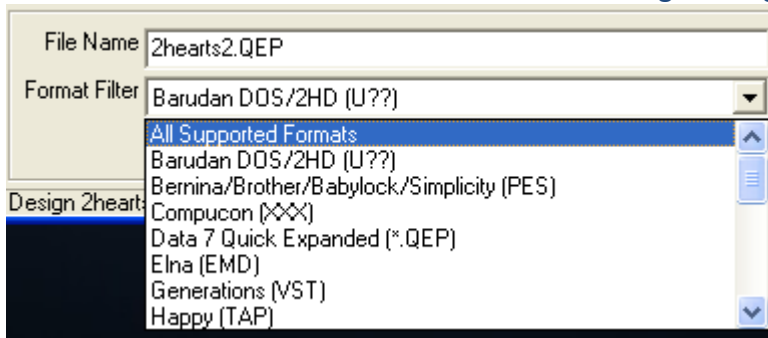


What thumbnails are shown depends on the selection set in the “Format Filter” shown below

# Data7 Consultancy

www.data7consultancy.com

How to convert a whole folder of designs using the Data 7 Conversion tool



If “All support formats” is selected then thumbnails for all supported embroidery file formats are shown in the “designs” window. If the above “Format Filter” is set to “Elna (EMD)” then regardless of what file formats are in the selected folder only Elna embroidery files will be shown.

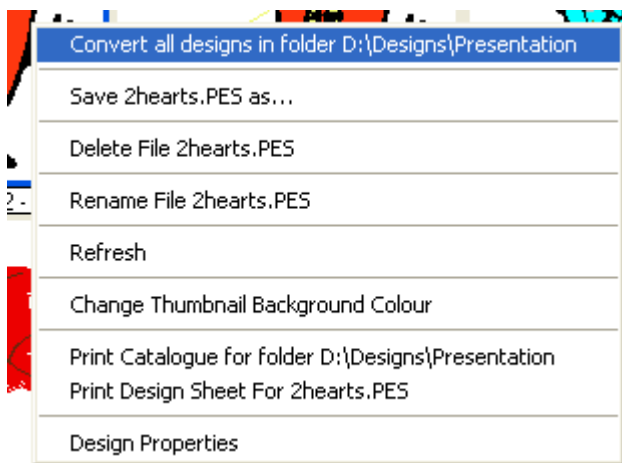
See the end of this document for supported embroidery file formats.

**N.B. The Data 7 conversion tool does not create designs or create designs from pictures or images. To create a design or digitise a design you’ll need the Data 7 EDS (Embroidery Design Suite) which allows you to “manually” digitise designs from scanned or loaded images.**

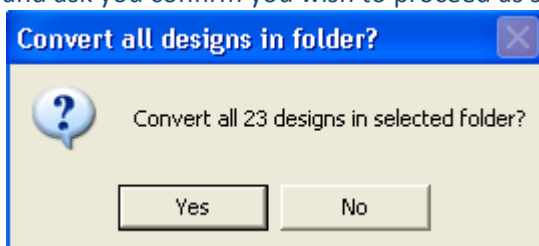
Step 3:

The “Convert all designs in folder option” will convert from many different formats but to only one chosen format.

Now you’ve chosen the folder simply right click on any design in the design window and choose the option “Convert all designs in folder xxxxxxxx” as shown below:-



The Data 7 Conversion Tool will then a warning message displaying how many designs it is about to convert and ask you confirm you wish to proceed as shown below:-

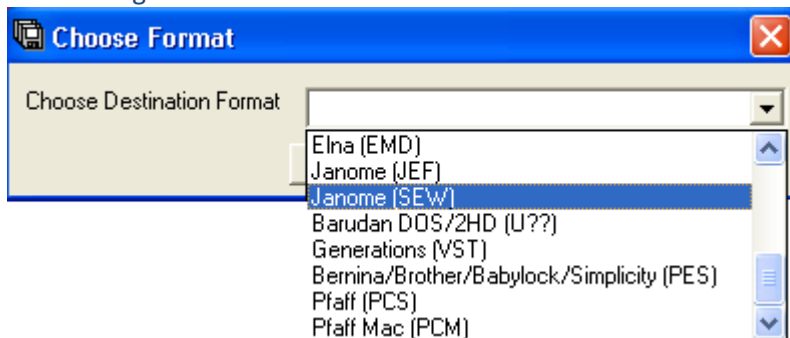


# Data7 Consultancy

www.data7consultancy.com

How to convert a whole folder of designs using the Data 7 Conversion tool

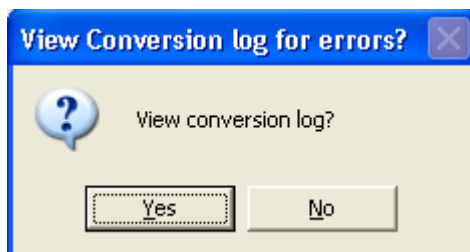
After confirming you wish to proceed, you'll be asked to choose the destination embroidery file format for all the designs as shown below:-



Whilst the conversion tool is converting you'll notice the status bar keeping you informed of its progress:-

Converting D:\Designs\Presentation\BATTER.QEP, 7 of 23, please wait...

Once the conversion process is complete you'll be given the option to see the error log. This will confirm if there have been any errors during the conversion of all files in the selected folder or not. Checking it is always a good idea. You may encounter errors such as "design was too big to fit in hoop" etc...



**N.B.**

The "Convert all designs in folder" option does NOT delete the original designs or move them. It simply makes a copy of them in the new format. The only time the original file is overwritten is if the source file format is the same as the destination file format which should be avoided wherever possible. If you need to convert source and destination of the same format we advise to make a backup copy of the source file first. We accept no responsibility for lost of design data. You use this conversion tool at your own risk.

# *Data7 Consultancy*

www.data7consultancy.com

How to convert a whole folder of designs using the Data 7 Conversion tool

## **Compatible Design Formats**

**The Data 7 Embroidery Design Conversion Tool can read and write the following design formats as well as display their thumbnails:**

- Viking Husqvarna .HUS
- Pfaff .VIP
- Data 7 Quick Expanded .QEP
- Barudan DOS .U01
- Babylock, Bernina, Brother .PES-
- Compucon .XXX
- Elna .EMD
- Generations .VST
- Happy .TAP
- Janome .JEF
- Janome .SEW
- Melco .EXP
- Pfaff .KSM
- Pfaff .PCS
- Pfaff .PCM
- Tajima .DSB (Barudan stitch data)
- Tajima .DST (Eltac stitch data)
- Tajima .DSZ (Fortron stitch data)
- Toyota .100
- Wilcom Barudan .T03 (Barudan stitch data)
- Wilcom Tajima .T01 (Eltac stitch data)
- Wilcom Zangs .T04 (Fortron stitch data)
- Wilcom ZSK .T05 (Fortron stitch data)