

Data7 Consultancy

www.data7consultancy.com

How to convert a design using the Data 7 Conversion tool

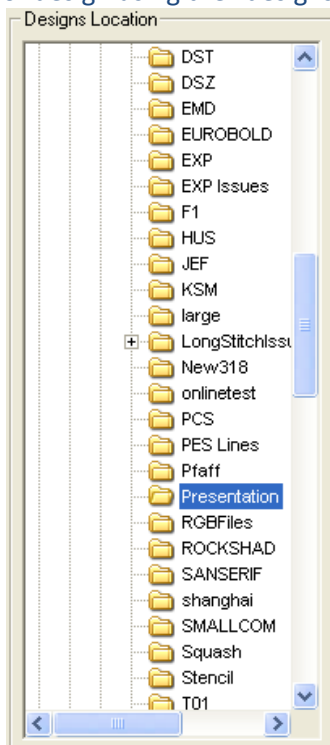
Step 1:

Start the Data 7 Conversion Tool – Remember to check for updates on our website for the latest version.

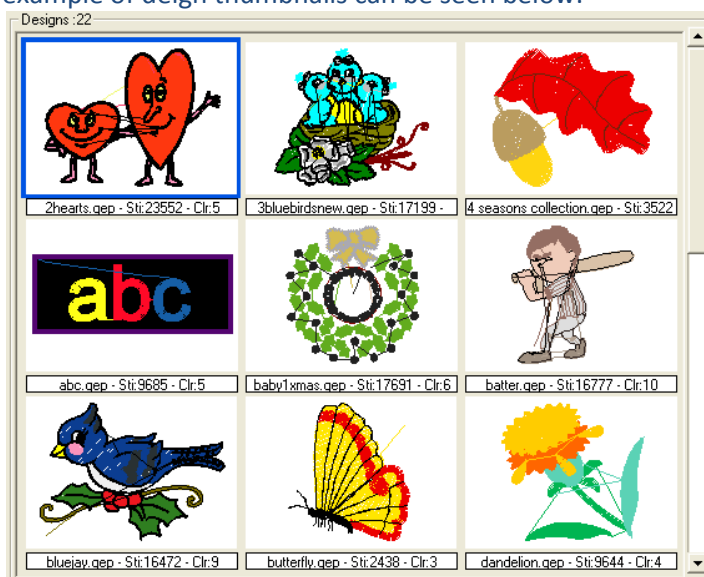
www.data7consultancy.com

Step 2:

Browse to the folder where the embroidery design format file is that you want to convert to another format of design using the “designs location” browser shown below.



Clicking on the desired folder will display the design thumbnails for all and only the support file formats. An example of design thumbnails can be seen below:-

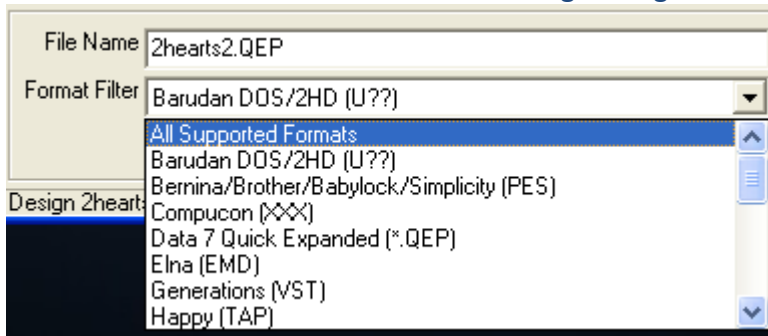


What thumbnails are shown depends on the selection set in the “Format Filter” shown below

Data7 Consultancy

www.data7consultancy.com

How to convert a design using the Data 7 Conversion tool



If “All support formats” is selected then thumbnails for all supported embroidery file formats are shown in the “designs” window. If the above “Format Filter” is set to “Elna (EMD)” then regardless of what file formats are in the selected folder only Elna embroidery files will be shown.

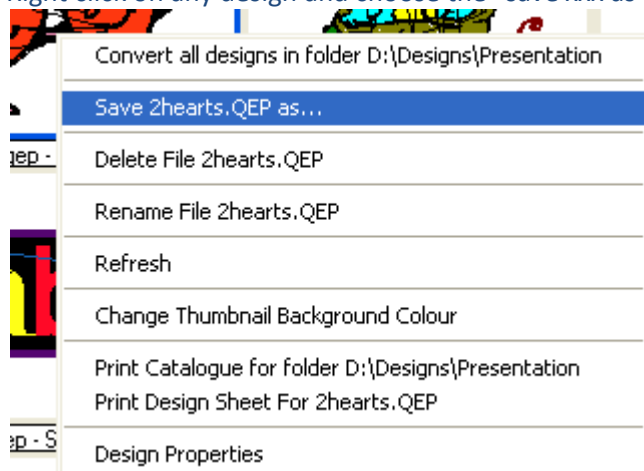
See the end of this document for supported embroidery file formats.

N.B. The Data 7 conversion tool does not create designs or create designs from pictures or images. To create a design or digitise a design you’ll need the Data 7 EDS (Embroidery Design Suite) which allows you to “manually” digitise designs from scanned or loaded images.

Step 3:

There are several ways to convert a design...

1. Right click on any design and choose the “save xxx as” option from the context menu show below.



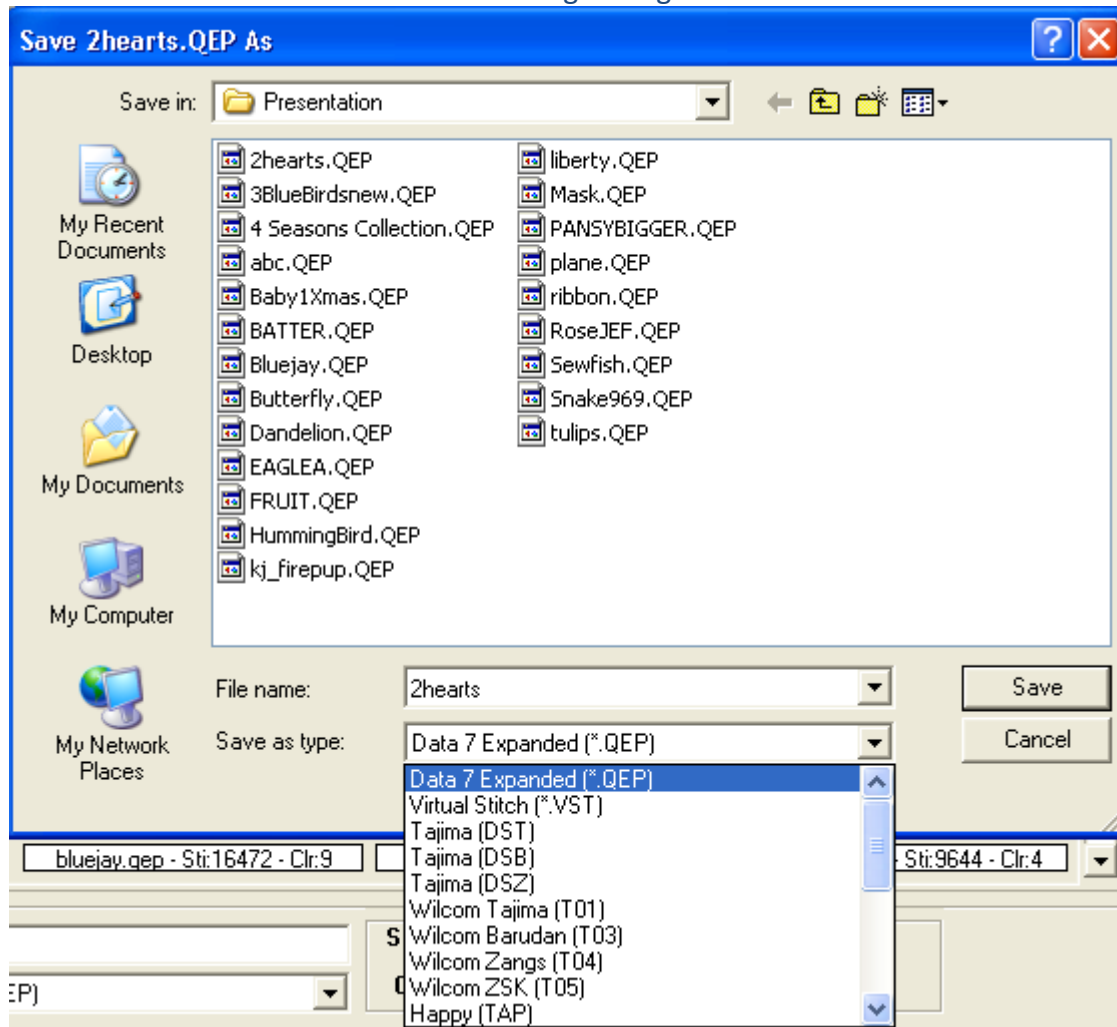
2. Left mouse click on the design and then click the disc icon
3. Double click on any design

All of the above shows the “Save xxx.xxx As” dialog shown below.

Data7 Consultancy

www.data7consultancy.com

How to convert a design using the Data 7 Conversion tool



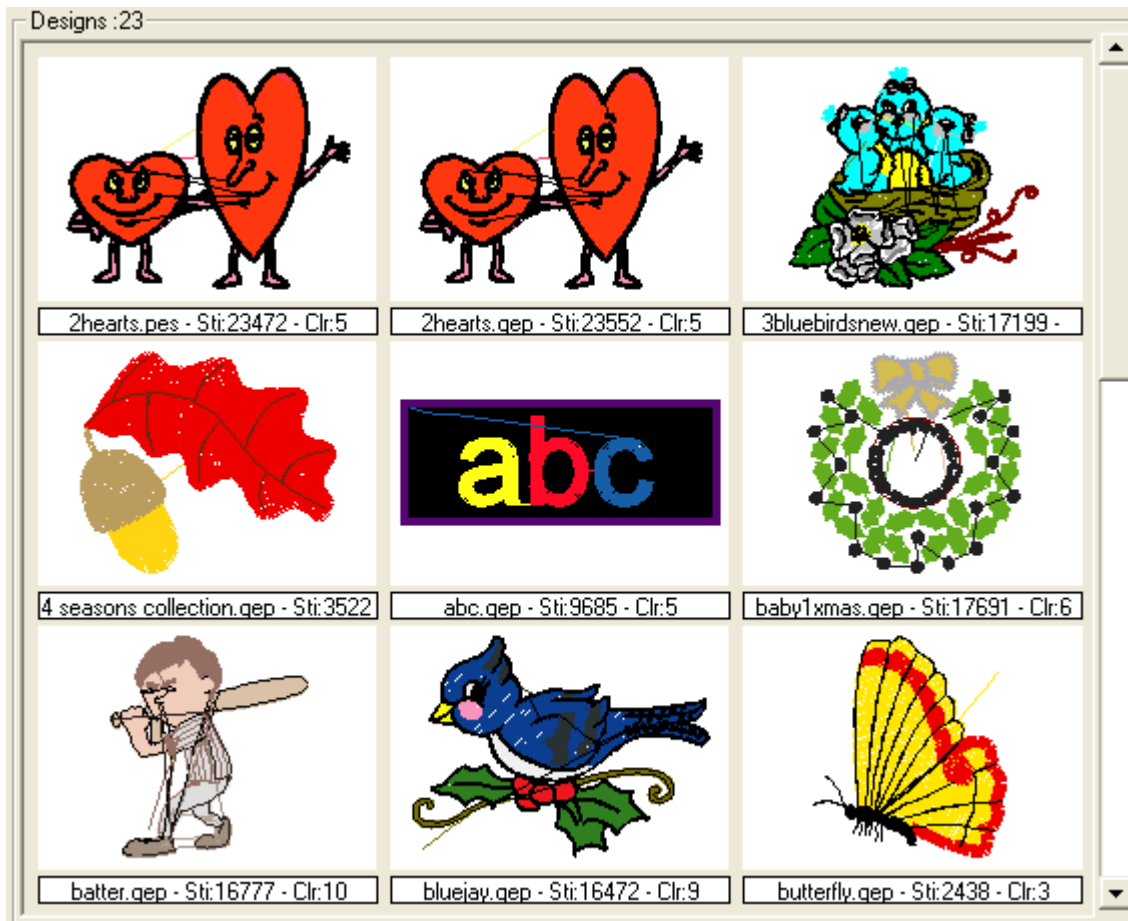
Use the above “Save as type” dropdown selection box to choose the embroidery format you wish to save your design to. Then enter a filename and press the “Save button”

Data7 Consultancy

www.data7consultancy.com

How to convert a design using the Data 7 Conversion tool

For this example the "2hearts.qep" file has been chosen, which is the Native Data 7 Quick Expanded file format, to be converted to "PES" format. Once saved the "Design" windows is refreshed automatically. As you can see from the below there are now 2 "2hearts" designs, the original "QEP" format and now a "PES" format.



This concludes this tutorial. Be sure to read our "How to convert a whole folder of designs" tutorials.

Data7 Consultancy

www.data7consultancy.com

How to convert a design using the Data 7 Conversion tool

Compatible Design Formats

The Data 7 Embroidery Design Conversion Tool can read and write the following design formats as well as display their thumbnails:

- Viking Husqvarna .HUS
- Pfaff .VIP
- Data 7 Quick Expanded .QEP
- Barudan DOS .U01
- Babylock, Bernina, Brother .PES-
- Compucon .XXX
- Elna .EMD
- Generations .VST
- Happy .TAP
- Janome .JEF
- Janome .SEW
- Melco .EXP
- Pfaff .KSM
- Pfaff .PCS
- Pfaff .PCM
- Tajima .DSB (Barudan stitch data)
- Tajima .DST (Eltac stitch data)
- Tajima .DSZ (Fortron stitch data)
- Toyota .100
- Wilcom Barudan .T03 (Barudan stitch data)
- Wilcom Tajima .T01 (Eltac stitch data)
- Wilcom Zangs .T04 (Fortron stitch data)
- Wilcom ZSK .T05 (Fortron stitch data)